



# xcelstor<sup>®</sup> *CLEAN DIESEL*

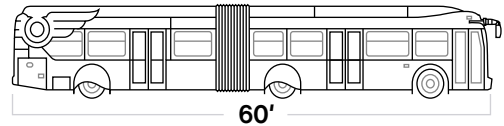
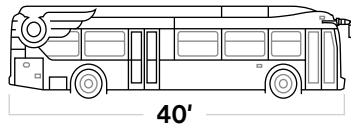
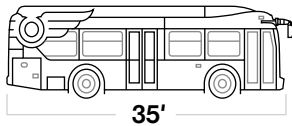
Safe and efficient mobility.



Transitioning fleets to low- and zero-emission.

Clean diesel mobility is a responsible alternative that improves air quality and lowers emissions relative to the buses they are replacing during the transition to low- and zero-emission.

Available in 3 Lengths



New Flyer has been leading innovation in mobility for 95 years, and today supports growing North American cities with sustainable buses, technology, and infrastructure.

## Facts.

New Flyer has successfully deployed over 6,400 clean diesel buses throughout North America since 2010. Today, its clean diesel technology is built on the Xcelstor<sup>®</sup> transit bus model.

# Best-in-class features.

## Enhanced safety + accessibility.

SmartRider™ enables kneeling to variable heights and minimizes the slope difference between a low-floor ramp and the bus floor. SmartRider™ ramp achieves a 1:6 slope ratio with a self-leveling feature.



## Dual-Sided Boarding Option

New Flyer offers an optional three-door configuration for all Xcelsior® 40' and 60' buses that includes a street-side door for bus rapid transit application.



## Passenger Capacity

Industry-leading passenger carrying capacity.

### 35' Xcelsior®

Seated 32 people  
Standees 35 people

### 40' Xcelsior®

Seated 40 people  
Standees 44 people

### 60' Xcelsior®

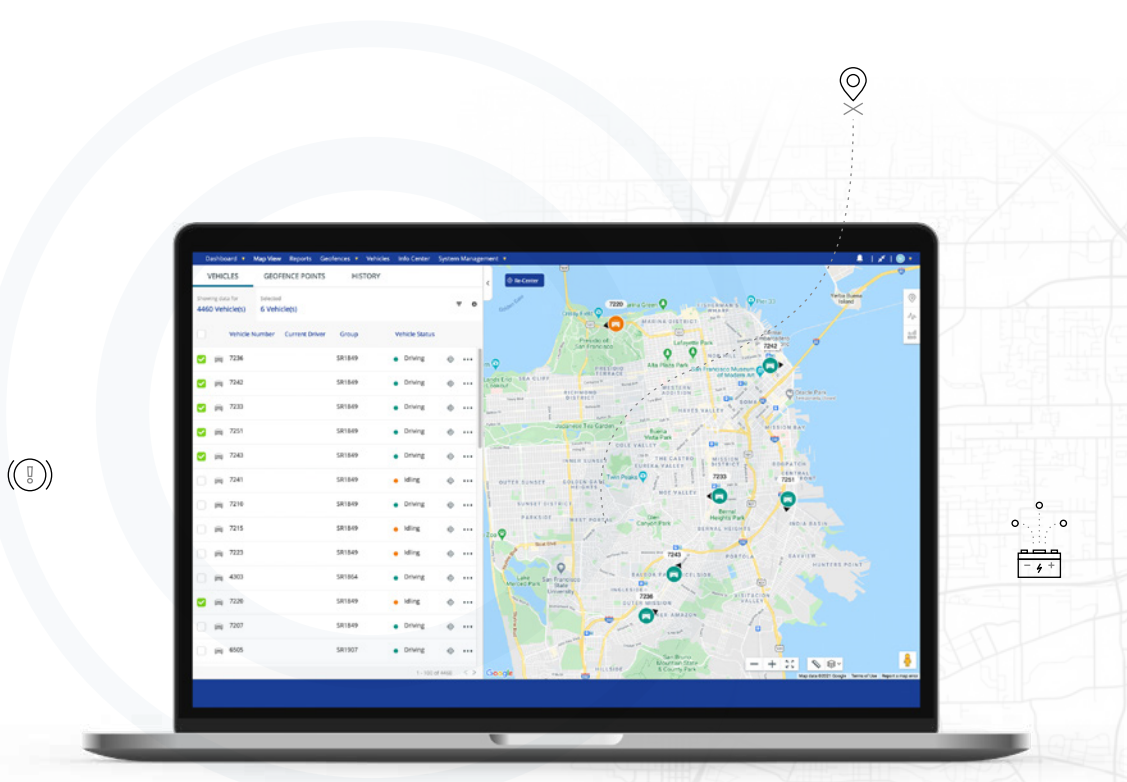
Seated 61 people  
Standees 62 people



## Performance

Weighs 8% less than previous models achieved through structure optimization and lightweight supplier components, leading to improved efficiency and lower operating costs.

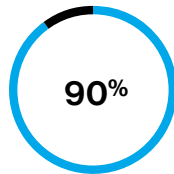
Delivers up to 8% fuel savings, reducing overall cost of ownership.



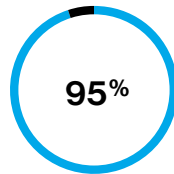
# Clean diesel technology.

## Proven technology.

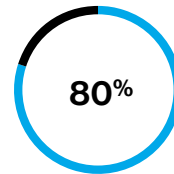
Clean diesel technology evolved around the year 2000 and has made a significant difference in air quality. It combines ultra-low sulfur diesel fuel, advanced engines, and effective emissions controls, resulting in a highly efficient and virtually smoke-free engine that can achieve lower emissions, reduce GHGs, and reduce the cost of bus operation.



Reduction in non-methane hydrocarbon (NMHC) emissions.



Reduction in NOx emissions.



Reduction in particulate matter emissions.

## Emission standards.

New Flyer clean diesel buses conform to the EPA and NHTSA comprehensive Heavy-Duty National Program that reduces greenhouse gas emissions and fuel consumption for heavy-duty highway vehicles.

According to the EPA and NHTSA, the final phase 2 greenhouse gas emissions standards (including heavy-duty vehicles produced from 2021-2027) are expected to:



**Lower CO2 emissions** by approximately 1.1 billion metric tons.



**Save vehicle owners** fuel costs of about \$170 billion.



**Reduce oil consumption** by up to two billion barrels over the lifetime of the vehicles sold under the program.



Measurements	35' XD35	40' XD40	60' XD60
<b>Length</b>	36' 3" (11.05m) Over bumpers; 35' 5" (10.80m) Over body	41' 0" (12.50m) Over bumpers; 40' 2" (12.24m) Over body	60' 10" (18.54m) Over bumpers; 60' 0" (18.29m) Over body
<b>Width</b>	102" (2.6m)	102" (2.6m)	102" (2.6m)
<b>Roof Height</b>	10' 6" (3.2m) over A/C	10' 6" (3.2m) over A/C	10' 6" (3.2m) over A/C
<b>Step Height</b>	14" (356mm)	14" (356mm)	14" (356mm)
<b>Front Step Height (Kneeled)</b>	10" (254mm)	10" (254mm)	10" (254mm)
<b>Interior Height – Floor to Ceiling</b>	79" (2m) Over front and rear axle; 95" (2.4m) Mid-coach	79" (2m) Over front and rear axle; 95" (2.4m) Mid-coach	79" (2m) Over front and rear axle; 95" (2.4m) Mid-coach
<b>Tire Size</b>	305/70R22.5	305/70R22.5	305/70R22.5
<b>Aisle Width</b>	21" to 24" (559mm to 610mm) (varies with seat model)	21" to 24" (559mm to 610mm) (varies with seat model)	22" to 24" (559mm to 610mm) (varies with seat model)
<b>Wheelbase</b>	226.75" (5.8m)	283.75" (7.2m)	229" (5.8m) Front / 293" (7.4m) rear
<b>Propulsion</b>			
<b>Transmission</b>	Allison; Voith and ZF options available	Allison; Voith and ZF options available	Allison; Voith and ZF options available
<b>Engine Options</b>	Cummins L9	Cummins L9	Cummins L9
<b>Passenger Capacity</b> (With wheelchair barrier protection)			
<b>Seats</b>	Up to 32	Up to 40	Up to 61 (with one exit door)
<b>Standees</b>	Up to 35	Up to 44	Up to 62 (with one exit door)
<b>Accessibility</b>			
<b>Doors</b>	2	2	2 or 3 (option for up to 5 doors)
<b>Wheelchair Accessibility</b>	32" (813mm) wide, 1:6 slope NFIL or SmartRider™ ramp, front door	32" (813mm) wide, 1:6 slope NFIL or SmartRider™ ramp, front door	32" (813mm) wide, 1:6 slope NFIL or SmartRider™ ramp, front door
<b>Wheelchair Locations</b>	2 - Front location, rear location also available (other options available)	2 - Front location, rear location also available (other options available)	2 - Front location, rear location also available (other options available such as bridge plates)
<b>Approach Angle</b>			
<b>Approach/Departure/Breakover Angles</b>	9°/9°/12°	9°/9°/9°	9°/9°/12° (front) 9° (back)
<b>Turning Radius</b> (Body, with aluminum wheels; *Varies with wheel type)			
<b>Turning Radius</b>	39' (11.9m)*	43.5' (13.3)*	42' (12.8m)*
<b>Main Components</b>			
<b>Floor</b>	Composite at rear interior step, ACQ Plywood remainder (dB Ply used on upper deck). Tarabus, Altro, RCA	Composite at rear interior step, ACQ Plywood remainder (dB Ply used on upper deck). Tarabus, Altro, RCA	Composite at rear interior step, ACQ Plywood remainder (dB Ply used on upper deck). Tarabus, Altro, RCA
<b>Electrical System</b>	Parker Vansco	Parker Vansco	Parker Vansco
<b>Cooling System</b>	Electric cooling fans (EMP, Modine)	Electric cooling fans (EMP, Modine)	Electric cooling fans (EMP, Modine)
<b>Fuel Tank</b>	Polyethylene fuel tanks: 100 gallon (379 L); 125 gallon (473 L); Stainless steel tanks: 100 gallon (379 L) 125 gallon (473 L)	Polyethylene fuel tanks: 100 gallon (379 L); 125 gallon (473 L); Stainless steel tanks: 100 gallon (379 L) 125 gallon (473 L)	Polyethylene fuel tanks: 100 gallon (379 L); 125 gallon (473 L); Stainless steel tanks: 100 gallon (379 L) 125 gallon (473 L)
<b>HVAC</b>	Thermo King RLF or RLFEA Series System	Thermo King RLF or RLFEA Series System	Thermo King RLF or RLFEA Series System (front & rear)
<b>Axles</b>	MAN VOK 07 Front disc brakes; MAN HY-1350 Rear disc brakes; Single reduction axle	MAN VOK 07 Front disc brakes; MAN HY-1350 Rear disc brakes; Single reduction axle	MAN VOK 07 Front disc brakes; ZF AVN 132 Center disc brake; MAN HY-1350 Rear disc brakes; Single reduction axle



# xcelstor<sup>®</sup> *CLEAN DIESEL*

[newflyer.com/xcelstor-diesel](http://newflyer.com/xcelstor-diesel)



**VIC** | VEHICLE INNOVATION CENTER

Learn more about this technology at the Vehicle Innovation Center  
[newflyer.com/VIC](http://newflyer.com/VIC)