



Building and modernizing your fleet? NFI Connect™ is ready for you.

Features.

NFI Connect™ is an exclusive, advanced telematics solution that gives you real-time oversight of your entire fleet, improving bus uptime and safety, and lowering costs.



Built-in Smart Technology

Our on-board technology communicates live GPS and analytic data to ensure optimal bus performance and safety.



Breakdown Prevention

Knowing about a problem, before it becomes a breakdown is key to successful fleet management. Access diagnostic fault codes anytime, without needing to physically inspect the bus, allowing for proactive maintenance and minimizing the risk of unexpected breakdowns.



Remote Access + Real-Time Alerts

No matter your location or device, the entire suite of information is accessible - with live event notifications sent as issues arise.



Powerful Management Tool

NFI Connect™ monitors all critical vehicle on-board systems and data, while recording GPS location for real-time monitoring and provides enhanced Fault Codes reporting, helping you track and address issues more effectively.



Constant Collaboration

Our Active Centre Support team monitors your fleet and regularly sends interactive reports about the overall performance of your fleet.



Fully Customizable

Data reports are only important when the information they contain matters to you. We can adapt them to meet your specific goals and needs.

Beyond data.

Our team is involved at every stage — developing, validating, and testing all back-end implementations and module programming, while providing full project management and consulting support. Plus, we're continually adding new features to help you better manage your fleet. Here are some of the latest updates:

Easily perform remote over-the-air updates to your multiplexing module (CAN Controller) with a coordinated implementation alongside our team.

Our custom-built geofencing application delivers precise messages to your vehicles at specific trigger points.

Current Geofencing Applications

- ✓ EV/Hybrid mode (For Diesel-Electric Vehicles)
- ✓ Door Activation (5-Door Vehicles)
- ✓ Smart Rider™ Steep-hill
- ✓ Smart Rider™ Auto Lower and Raise feature

Why NFI Connect™?

NFI Connect™ analytics can be retrieved 24/7 via a laptop or mobile device.



Saves Fuel

Gain full visibility into your fleet's economy and consumption that helps improve charging and driving performance.



Solves Problems

Quickly identify and address issues with real-time alerts and a live dashboard, enabling rapid action to minimize downtime and keep operations running smoothly.



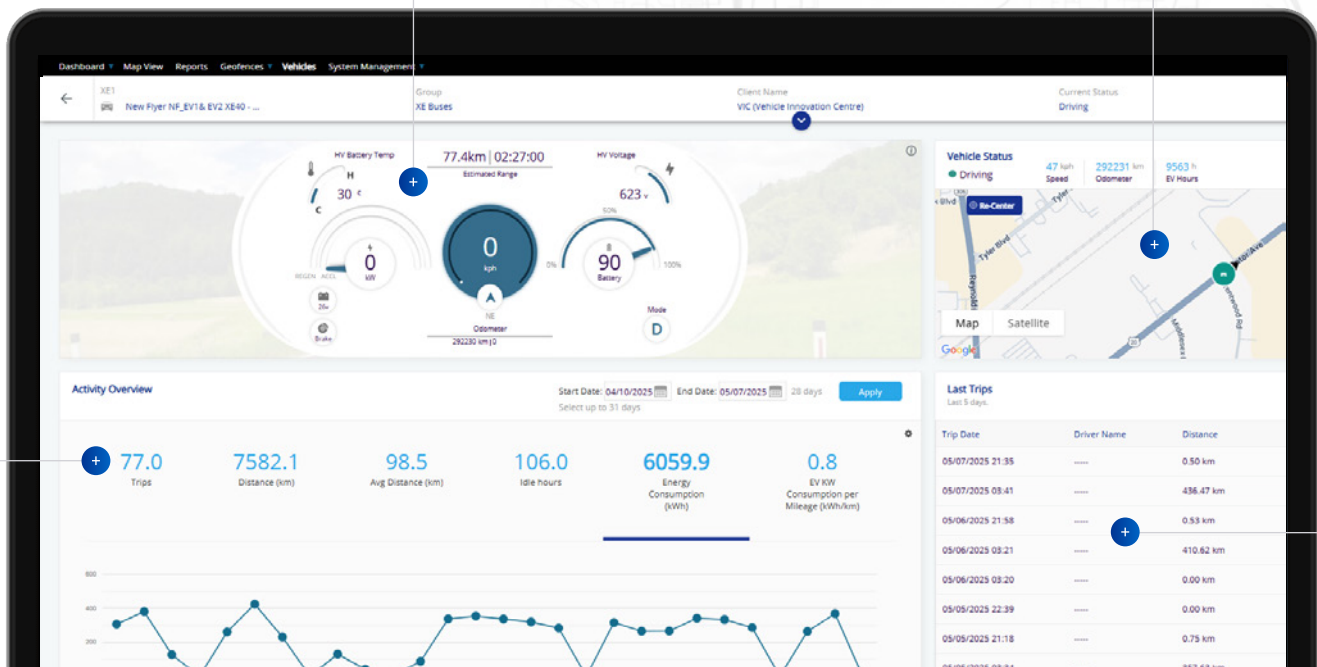
Saves Time

NFI Connect™ gives you smarter oversight of your whole operation, ultimately improving bus uptime.

Daily Activity Overview

Real-time Vehicle Dashboard

Real-time Location



Trip History

Flexible Deployment

Easy to deploy, compatible with multiple vehicle platforms and requires minimal IT infrastructure.

Stronger Performance

Enhance your fleet performance with powerful data analysis and insightful diagnostic analytics reports at your fingertips.

Secure

Protected and monitored by state-of-the-art cyber security technology.

Always Up to Date

Our secure over-the-air updates help keep your fleet always up to date with the latest software.

CONNECT 360™

Connect 360™, powered by NFI Connect™, is available on every NFI zero-emission vehicle and tracks battery-electric and fuel cell-electric bus and coach performance using secure technology.

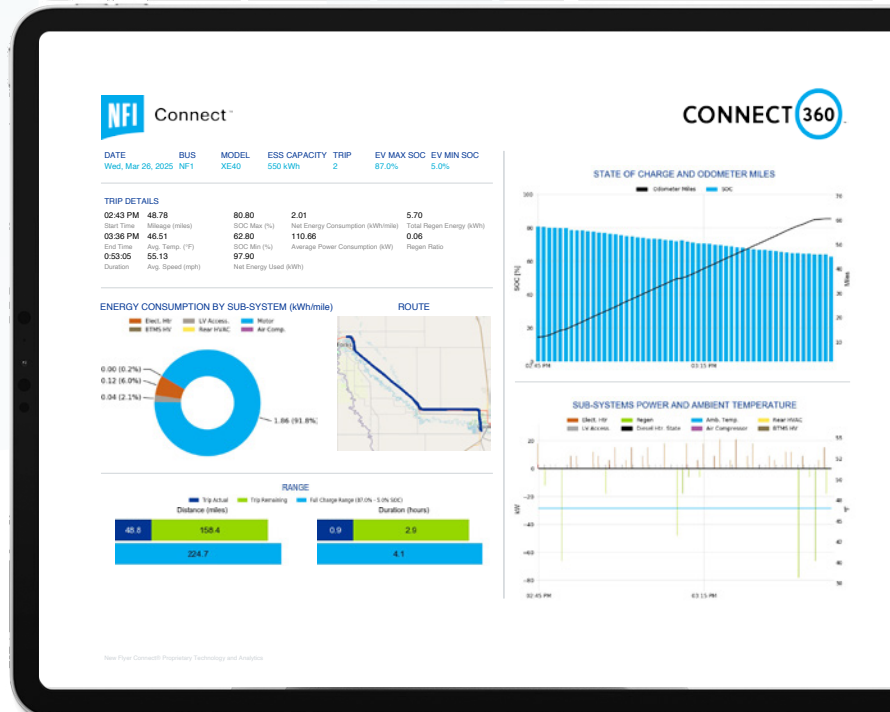
Connect 360™ is a customizable performance dashboard that provides smart analytic reporting to expand insight and intelligence for managing your zero-emission buses and coaches.

It provides an easy-to-read visual report for battery-electric and fuel cell-electric bus and operator performance, allowing you to better understand this new technology to maximize efficiency, reliability and sustainability, and facilitate the transition to a high-performing zero-emission fleet.

Key analytics.

Real-time performance statistics are displayed in easy-to-read graphs and measurements. This helps you optimize your zero-emission bus and coach fleet – from drivers and passengers, to maintenance and scheduling teams.

- ✓ Battery state-of-charge
- ✓ GPS location and average speeds
- ✓ HVAC energy consumption per mile
- ✓ Regenerative braking
- ✓ Range achieved and remaining
- ✓ Energy consumption (kWh/mile)



Regenerative braking



Range estimation values



HVAC consumption/mile

Benefits.



Additional range capability with improved driver performance.



Decision-making information to **optimize charging strategies**.



Intelligence on how to **preserve battery energy** throughout the day.



Reduced operating cost and maximum fleet utilization.



Key analytics for Connect 360™ were developed through the Vehicle Innovation Center, North America's first innovation lab dedicated to the exploration and advancement of bus and coach technology. To date, Connect 360™ remains the only reporting technology of its kind for battery-electric buses and coaches in North America.

About NFI.

Leveraging 450 years of combined experience, NFI is leading the electrification of mass mobility around the world. With zero-emission buses and coaches, infrastructure, and technology, NFI meets today's urban demands for scalable smart mobility solutions. Together, NFI is enabling more livable cities through connected, clean, and sustainable transportation.

nfigroup.com